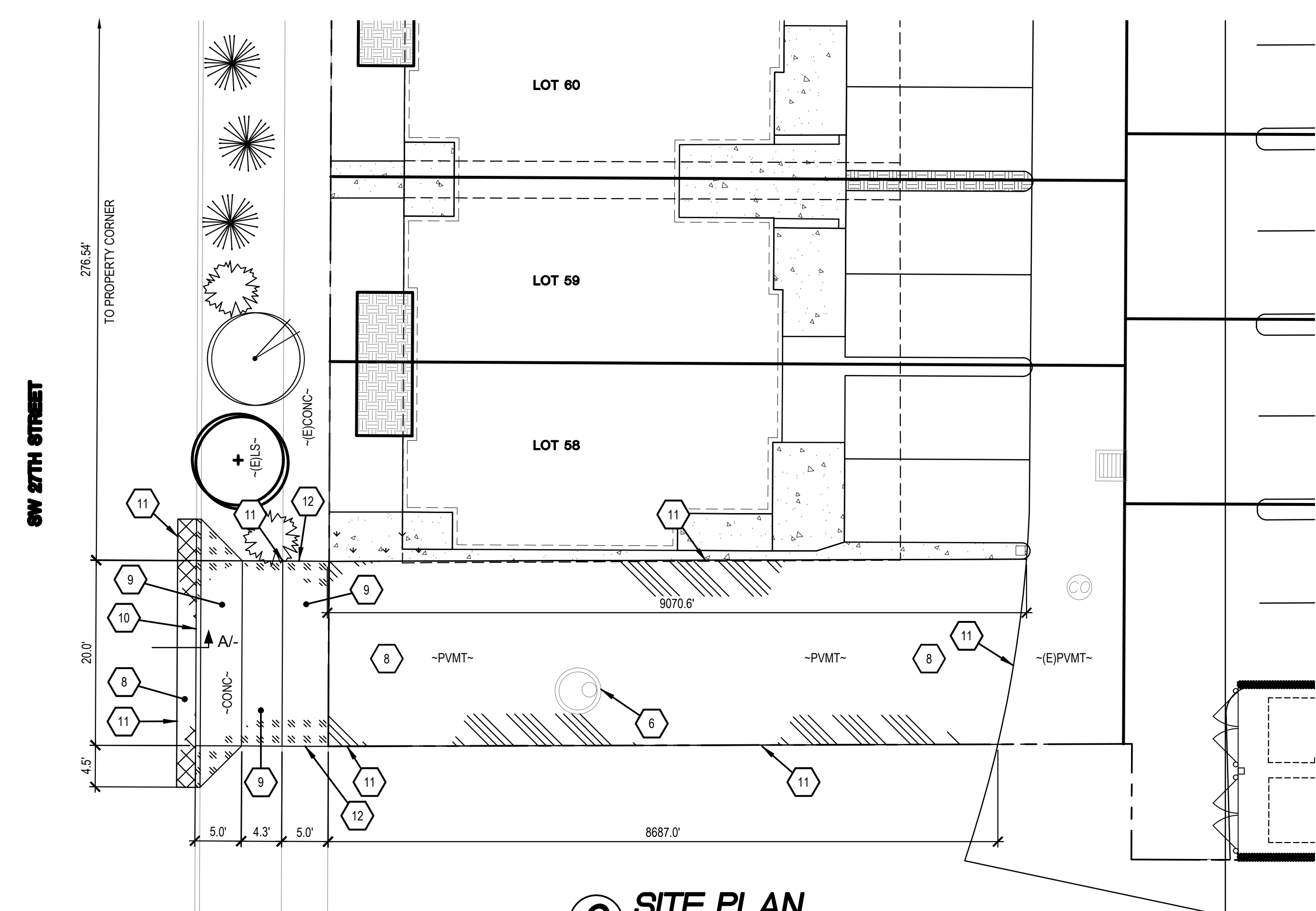
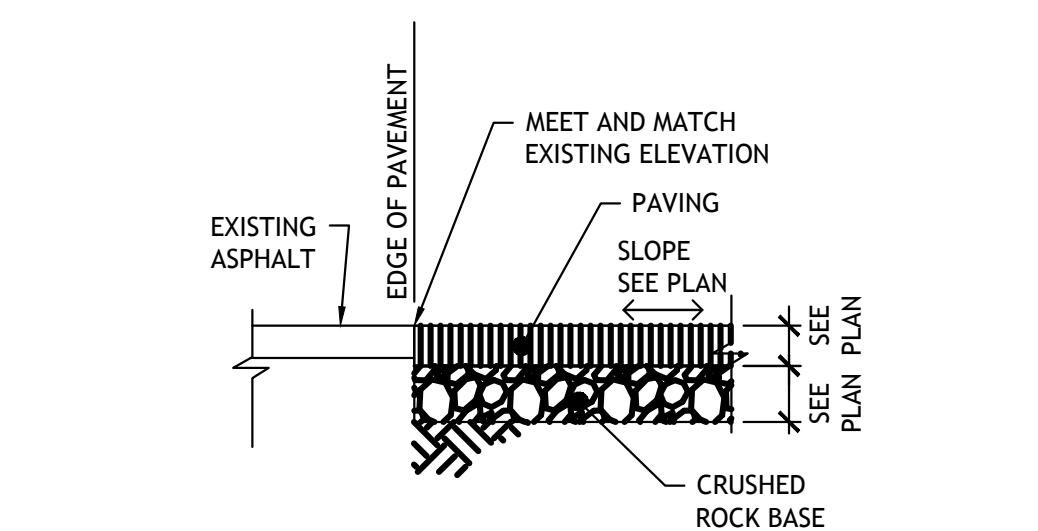


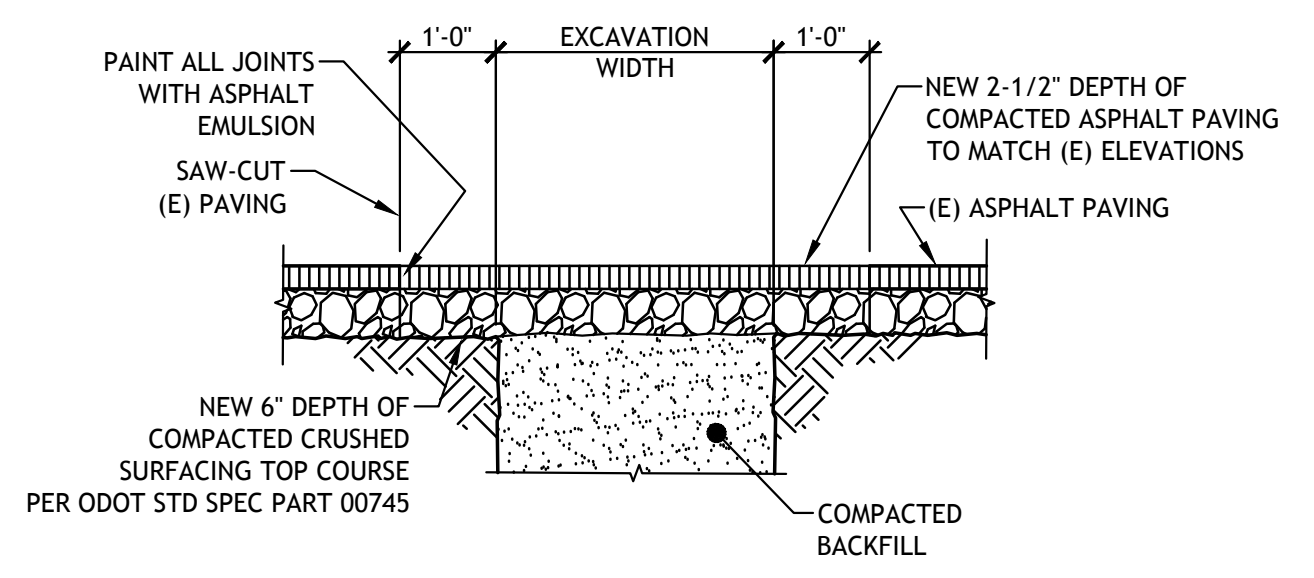
**1 DEMO PLAN**  
 SCALE 1"=10'



**2 SITE PLAN**  
 SCALE 1"=10'



**A SECTION**  
 SCALE 1"=1'-0" REF: -



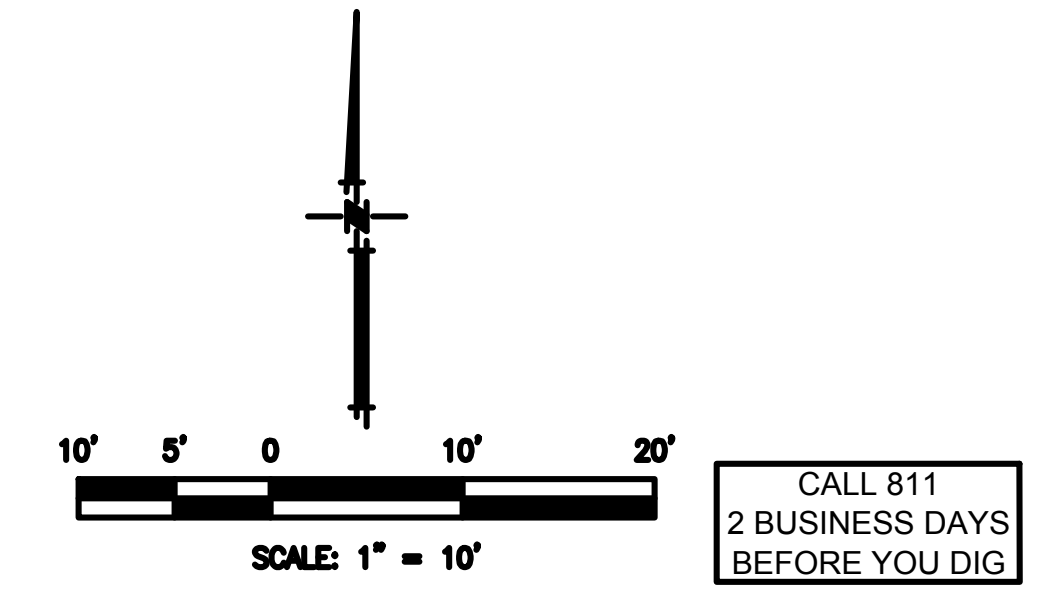
**B SECTION**  
 SCALE 1/2"=1'-0" REF: -

**KEY NOTES**

- 1 SAWCUT ASPHALT, PROVIDE NEAT CUT EDGE
- 2 REMOVE ASPHALT AND DISPOSE OF PROPERLY, REMOVE GRAVEL BASE AND SALVAGE FOR REUSE
- 3 SAWCUT, CONCRETE SIDEWALK, AND CONCRETE CURBING AS NECESSARY FOR NEW CONSTRUCTION AT NEAREST EXPANSION/CONTROL JOINT AS INDICATED, PROVIDE NEAT CUT EDGE
- 4 REMOVE CONCRETE CURBING AND DISPOSE OF PROPERLY
- 5 REMOVE CONCRETE AND DISPOSE OF PROPERLY, REMOVE GRAVEL BASE AND SALVAGE FOR REUSE
- 6 ADJUST EXISTING UTILITY LIDS TO GRADE WITH TRAFFIC RATED LIDS.
- 7 REMOVE LANDSCAPE FEATURES AS NECESSARY FOR NEW CONSTRUCTION. PROTECT ANY TREES, THAT ARE NOT INCLUDED IN REMOVAL, AS NECESSARY DURING CONSTRUCTION, COORDINATE LANDSCAPE WORK WITH LANDSCAPER
- 8 STANDARD ASPHALT SECTION - 2-1/2" THICK ASPHALT OVER 6" TOP COURSE PER ODOT STD SPEC PART 00745
- 9 CONCRETE SECTION - 4" THICK CONCRETE SIDEWALK OVER 6" OF 3/4" MINUS TOP COURSE TROWEL CONTROL JOINTS AT 10' O.C. AND INSTALL EXPANSION JOINTS AT 30' O.C.
- 10 NEW ACCESS DRIVE PER CITY OF REDMOND STANDARD DETAIL 2-11
- 11 MEET AND MATCH EXISTING GRADES
- 12 TRANSITION EXISTING SIDEWALK TO MEET AND MATCH NEW ACCESS DRIVE

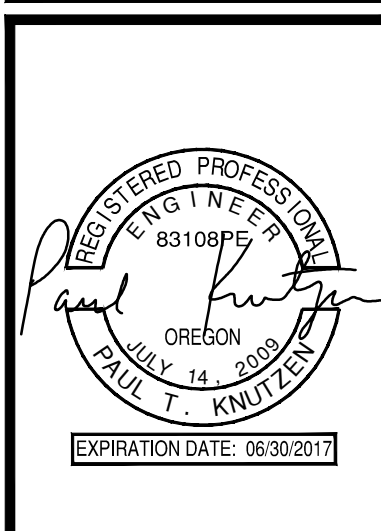
**NOTES**

1. PRIOR TO BEGINNING WORK, CONTACT THE OWNER/CITY OR COUNTY OFFICIAL TO COORDINATE TRAFFIC FLOW, WORK SCHEDULES AND UTILITY INTERFACES.
2. NOT ALL UNDERGROUND UTILITIES ON THESE DRAWINGS MAY BE SHOWN. FIELD LOCATE AND VERIFY ALL UNDERGROUND UTILITIES. COORDINATE ALL RELOCATION WORK WITH THE APPROPRIATE UTILITY COMPANY AND/OR OWNER PRIOR TO ANY EXCAVATION WORK.
3. FIELD VERIFY ALL MEASUREMENTS AND INVERTS PRIOR TO START OF WORK.
4. ACP AND CONCRETE CUT LINES ARE BASED ON NEW SURFACE FEATURES TO BE INSTALLED. CUT LINES DO NOT ACCOUNT FOR GRADING, TRENCHING, GRADE TRANSITIONS, OR OVERLAY WORK. ADJUST ACTUAL CUT AS NECESSARY FOR RELATED NEW WORK.
5. REMOVE ALL EXISTING IRRIGATION SYSTEM COMPONENTS WITHIN NEW CONSTRUCTION AREAS THAT WILL INTERFERE WITH NEW WORK. CUT, CAP, AND SEAL WATERTIGHT EXISTING PIPING TO REMAIN.
6. NOT ALL ELECTRICAL WORK MAY BE SHOWN ON THE CIVIL SITE DRAWINGS, AND IS SHOWN FOR REFERENCE PURPOSES ONLY. REFER TO ELECTRICAL DRAWINGS IN THIS CONSTRUCTION PACKAGE FOR ELECTRICAL DEMOLITION, RELOCATION, AND NEW INSTALLATION. ELECTRICAL SITE DRAWINGS SHALL TAKE PRECEDENCE PERTAINING TO ANY ELECTRICAL WORK WHICH MAY BE SHOWN ON THE CIVIL SITE DRAWINGS.
7. ALL UTILITY MAINS MUST REMAIN OPERATIONAL DURING CONSTRUCTION. COORDINATE WITH THE CITY TO SCHEDULE SERVICE OUTAGES AS NEEDED.
8. CONTRACTOR TO REMOVE ANY ABANDONED UTILITY LINES AS NEEDED FOR NEW CONSTRUCTION AND PROPOSED GRADES.
9. A SEALED EXPANSION JOINT MATERIAL SHALL BE USED AT JOINTS WHERE NEW CONCRETE ABUTS EXISTING CONCRETE (TYP).
10. WHERE NEW SIDEWALK, DRIVEWAY OR ACCESSIBLE RAMP TIES INTO (E)SIDEWALK, REMOVE AND REPLACE ADDITIONAL SIDEWALK PANEL FOR ADA TRANSITION IF REQUIRED.
11. ONE DAY PRIOR TO PLACEMENT OF BITUMINOUS MATERIAL ON THE BASE, THE SURFACE SHALL BE STERILIZED WITH A SOIL HERBICIDE.
12. WHERE NEW ASPHALT JOINS EXISTING, THE EXISTING ASPHALT SHALL BE CUT TO A VERTICAL EDGE AND TACKED WITH ASPHALT EMULSION TYPE CSS-1. THE NEW ASPHALT SHALL BE FEATHERED BACK OVER THE EXISTING TO SEAL THE JOINT.
13. ASPHALT PAVING MATERIALS AND CONSTRUCTION PRACTICES SHALL BE IN ACCORDANCE WITH SECTION 00745 HOT MIXED ASPHALT CONCRETE, OF THE 2015 OREGON STANDARD SPECIFICATIONS FOR CONSTRUCTION. HMAC SHALL BE LEVEL 2, 1/2" DENSE PG 64-28.
14. ALL ASPHALT AND BASE THICKNESSES NOTED ARE COMPACTED THICKNESS.



CALL 811  
 2 BUSINESS DAYS  
 BEFORE YOU DIG

NEW DEVELOPMENT  
**THE 27 ELM**  
 A HUNTER RENAISSANCE DEVELOPMENT  
 REDMOND OREGON



**PARTIAL SITE PLAN**  
 Sheet Title  
 AS NOTED  
 Scale  
 1602  
 Project Number  
 NOVEMBER 8, 2016  
 Date  
 1600SC201DWG  
 File Name

Revisions  
**C2.01**